

snowlike – a miniature winter experience



Shallow depth of only approx. 15 cm

Features

- Closed system - two glass walls
- Upright or landscape format
- Measurements (WxDxH): 200 cm x 15 cm x 100 cm
- Scenery set in front of or behind the frame
- Patented snowlike 24/7 loop-type snow system



Digital printing allows for tailor-made presentation

Features

- Closed system - four glass walls
- Measurements (WxDxH): 80 cm x 80 cm x 225 cm or 250 cm
- Hanging or standing decoration
- Integrated LED lighting

Wehomat 2000



Movement is more!

The Wehomat 2000 uniquely draws your customers' attention to your products

A swirl of rose petals, sparkling tinsel or any other light material - the Wehomat 2000 can be filled so that it perfectly complements your advertising campaign. The presentation of your product becomes an impressive visual experience.

Benefit from our entire range of services: flexible planning, quick and easy assembly and customised solutions.



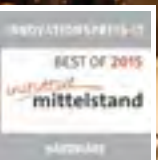
visuelle Effektgeräte - J.Eichler - Julius-Echter-Str. 4 - 97753 Karlstadt
Phone: +49 (0)931-88065950 - Fax: +49 (0)931-88065953
info@snowlike.de



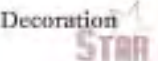
without using water, a cooling medium or chemistry!

Version 02-2017

- Freely scaleable systems
- Continuous operation 24/7
- Little amount of maintenance
- Low running costs
- Patented loop-type system
- Customised solutions



Made in Germany



on the basis of a decision by the German Bundestag

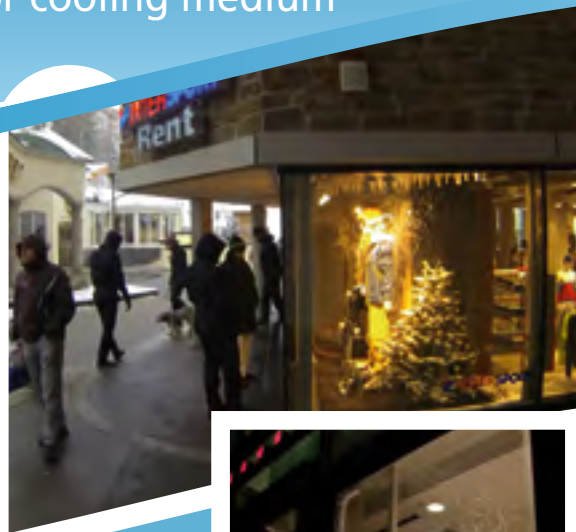
www.snowlike.de



The snow machine without water or cooling medium



customised solutions



Snow simulations with drop heights >25m

Snowfall application in the atrium of a shopping centre. (Height 25 m)

fully scaleable modular system

snowlike MODULAR S3090/S3012

For an uninterrupted snow curtain across the entire shop window It consists of a base plate and a platform stand with collecting tray. It includes an integrated, patented snowlike snow module with all components necessary for 24/7 operation. Individual systems can be cascaded over any optional widths.



Example measures:

S3090	B: 150 / 200 / 300 / ... cm	T: 90 cm	H: 43 cm (Box)
S3012	B: 150 / 200 / 300 / ... cm	T: 120 cm	H: 43 cm (Box)

more sizes at request

Features

- Continuous operation 24/7 without a hitch
- Hanging or standing decoration
- Scaleable systems (width & height)
- Little amount of maintenance required
- Your goods remain completely intact!
- Geringe Betriebskosten
- Low running costs
- Quick installation



Snow always brings out the inner child, that magical innocence of fresh snow.

snowlike – winter wonderland for rent!

snowlike – almost like real snow

This will make the eyes of children and grown-ups alike light up. Just by pressing a button!

snowlike was developed to effectively stage your product, and it perfectly simulates real snowfall.

Where can you use snowlike?

Exhibition stands, events, cinema foyers, exhibition space or shop windows become magical attractions for visitors of all ages.

Owing to its properties, snowlike offers a wide range of applications, and is also suitable for the presentation of delicate objects such as clothing or fine mechanical parts.

Depending on the requirements, areas and sceneries of different sizes can be transformed into a white, moving winter landscape. Your products remain completely intact!

An open loop-type system with circulating granules creates a deceptively real snowfall effect.

The density of the snowfall can be regulated individually at any time.

